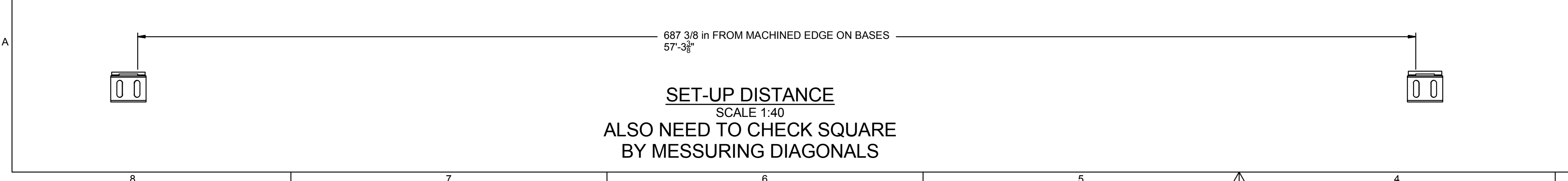


PRELIMINARY NOT FOR CONSTRUCTION

CUSTOMER RESPONSIBLE FOR ALL FOUNDATION BOLTS



THIS DRAWING, INCLUDING THE INFORMATION HEREON, IS NOT TO BE USED FOR ERECTION PURPOSES UNLESS CERTIFIED BY THE McLANAHAN CORPORATION. THE DRAWING, DESIGN AND DETAIL IS THE PROPERTY OF McLANAHAN CORPORATION AND SHALL NOT BE MODIFIED, COPIED OR USED DIRECTLY OR INDIRECTLY FOR ANY OTHER PURPOSE WITHOUT THE WRITTEN APPROVAL OF THE McLANAHAN CORPORATION. ALL RIGHTS OF DESIGN AND INVENTION ARE RESERVED.

THE LOADED WEIGHT OF THIS MACHINE IS (SEE NOTE) LBS. WHEN DESIGNING THE SUPPORTING STRUCTURE, A FACTOR OF SAFETY SHOULD BE APPLIED TO THE MACHINE LOADED WEIGHT PER THE FOLLOWING CHART:

VERTICAL LOADS	HORIZONTAL LOADS	
	LATERAL	TRANSVERSE
2.0	SEE NOTE PERPENDICULAR TO THE ROTATING AXIS OF THE ROLL OR DRUM	SEE NOTE PARALLEL TO THE ROTATING AXIS OF THE ROLL OR DRUM

UNLESS OTHERWISE NOTED, ALL WELDS ARE TO BE CONFORM TO ASME SECTION VIII DIVISION 1. ALL WELDS ARE TO BE 5/16 OF MINIMUM PLATE THICKNESS.

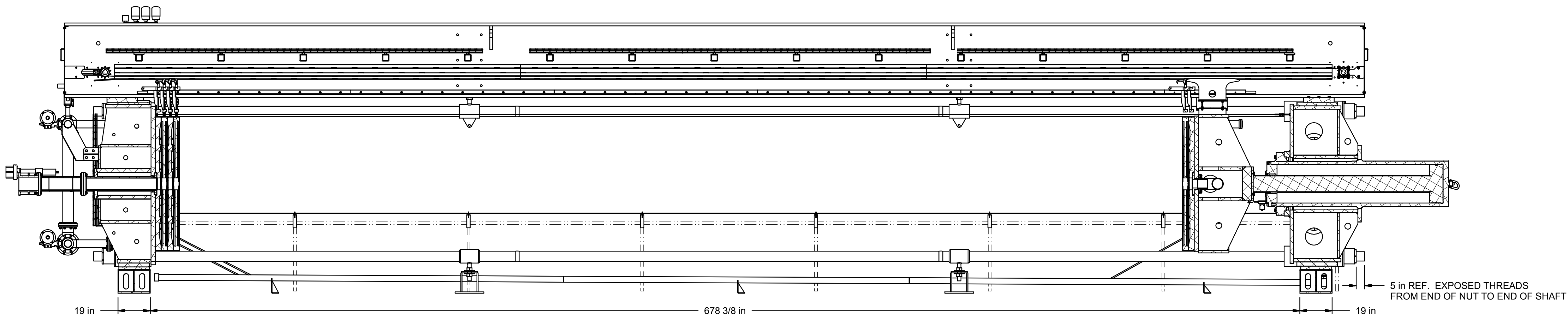
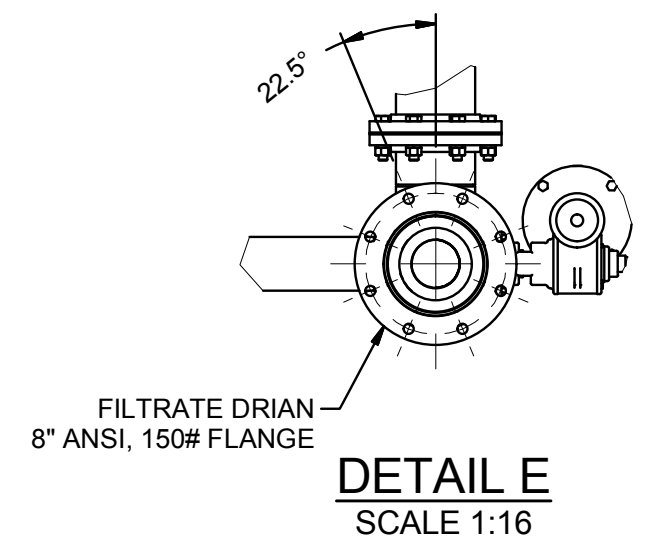
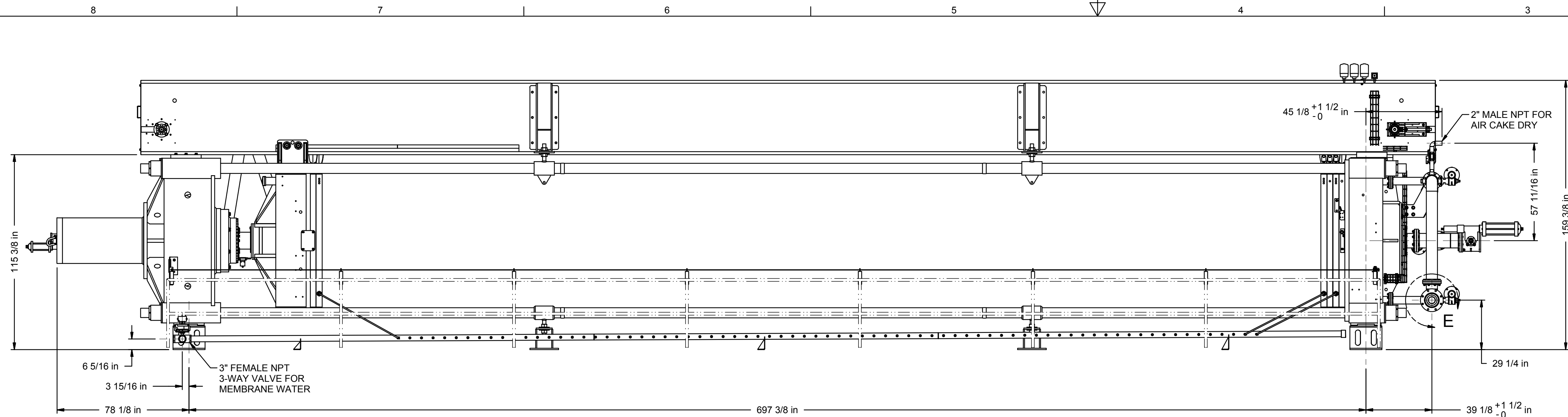
INFORMATION CONTAINED IN THIS DOCUMENT IS A TRADE SECRET AND ANY USE OF THE INFORMATION EXCEPT BY THE INTENDED RECEIVER, IS STRICTLY PROHIBITED. ANY MISAPPROPRIATION OF THE INFORMATION SHALL MAKE THE UNINTENDED RECEIVER LIABLE FOR ANY AND ALL DAMAGES SUFFERED AS A RESULT BY THE McLANAHAN CORPORATION, UNLESS OTHERWISE SPECIFIED. THE DIMENSIONS ON THIS DRAWING ARE IN INCHES UNLESS OTHERWISE NOTED.

McLanahan

DESIGNER: **DMiller** | CREATION DATE: 8/9/2013
 CHECKED BY: **BAP** | CHECKED DATE: 9/19/2013
 MACHINE: **MPFP** | MACHINE SIZE: 2000-151-40
 DRAWING NUMBER: **P35E34**

SCALE: 1:40 | WEIGHT: SEE NOTE | PART NUMBER: MPFP200015140001 | REV: 1

REVISIONS: 1



SECTION B-B
SCALE 1:40

PRELIMINARY NOT FOR CONSTRUCTION

THIS DRAWING, INCLUDING THE INFORMATION HEREON, IS NOT TO BE USED FOR ERECTION PURPOSES UNLESS CERTIFIED BY THE McLANAHAN CORPORATION. THE DRAWING, DESIGN AND DETAIL IS THE PROPERTY OF McLANAHAN CORPORATION AND SHALL NOT BE MODIFIED, COPIED OR USED DIRECTLY OR INDIRECTLY FOR ANY OTHER PURPOSE WITHOUT THE WRITTEN APPROVAL OF THE McLANAHAN CORPORATION. ALL RIGHTS OF DESIGN AND INVENTION ARE RESERVED.

THE LOADED WEIGHT OF THIS MACHINE IS (SEE NOTE) LBS. WHEN DESIGNING THE SUPPORTING STRUCTURE, A FACTOR OF SAFETY SHOULD BE APPLIED TO THE MACHINE LOADED WEIGHT PER THE FOLLOWING CHART:

VERTICAL LOADS	HORIZONTAL LOADS	
	LATERAL	TRANSVERSE
2.0	SEE NOTE PERPENDICULAR TO THE ROTATING AXIS OF THE ROLL OR DRUM	SEE NOTE PARALLEL TO THE ROTATING AXIS OF THE ROLL OR DRUM

UNLESS OTHERWISE NOTED, ALL WELDS ARE TO BE CONTINUOUS. FILET WELDS ARE TO BE 5/16 OF MINIMUM PLATE THICKNESS.

McLanahan

PARTS LIST AND ASSEMBLY FOR 151 PLATE MEMBRANE FILTER PRESS

AUTHOR	D Miller	CREATION DATE	8/9/2013
CHECKED BY	BAP	CHECKED DATE	9/19/2013
MACHINE	MPFP	MACHINE SIZE	2000-151-40
DRAWING NUMBER			

SCALE: 1:40 SEE NOTE | PART NUMBER: MPFP200015140001 | REV. 1

P35E34

SHEET 5 OF 5